

Echoes of the Jungle

AMAZON RIVER / TAMOPATA RAINFOREST

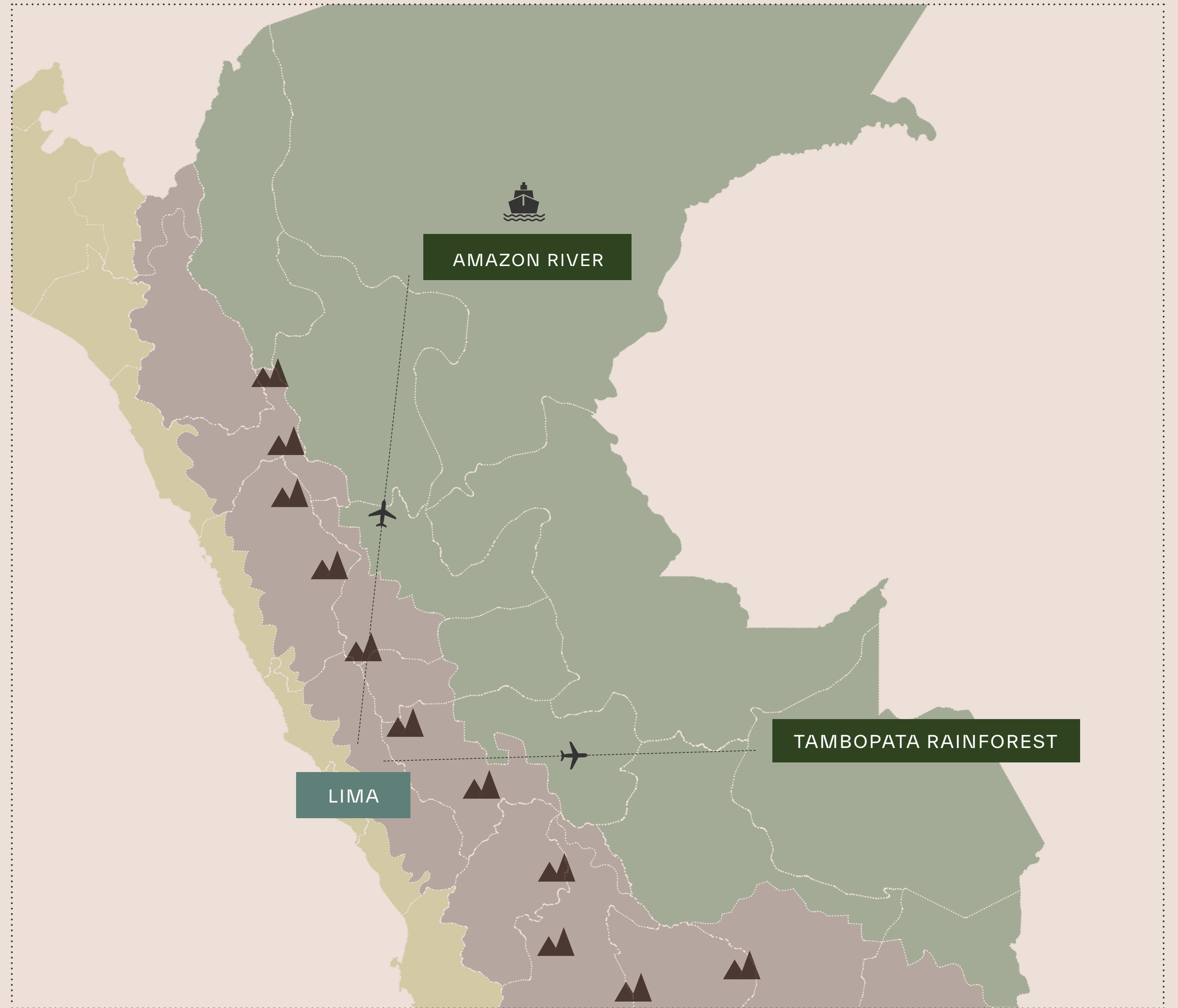


Suggested Itinerary

LIMA
1-2 NIGHTS

AMAZON RIVER CRUISE /
TAMBOPATA RAINFOREST
3-4 NIGHTS

TOTAL
4-6 NIGHTS



The Amazon Rainforest



CLIMATE

Mild temperatures, high humidity, sporadic drizzles in winter



YEARLY TEMPERATURES

Min: 14.9°C – 58.8°F | Max: 26.8°C – 80.2°F



ALTITUDE

Sea Level



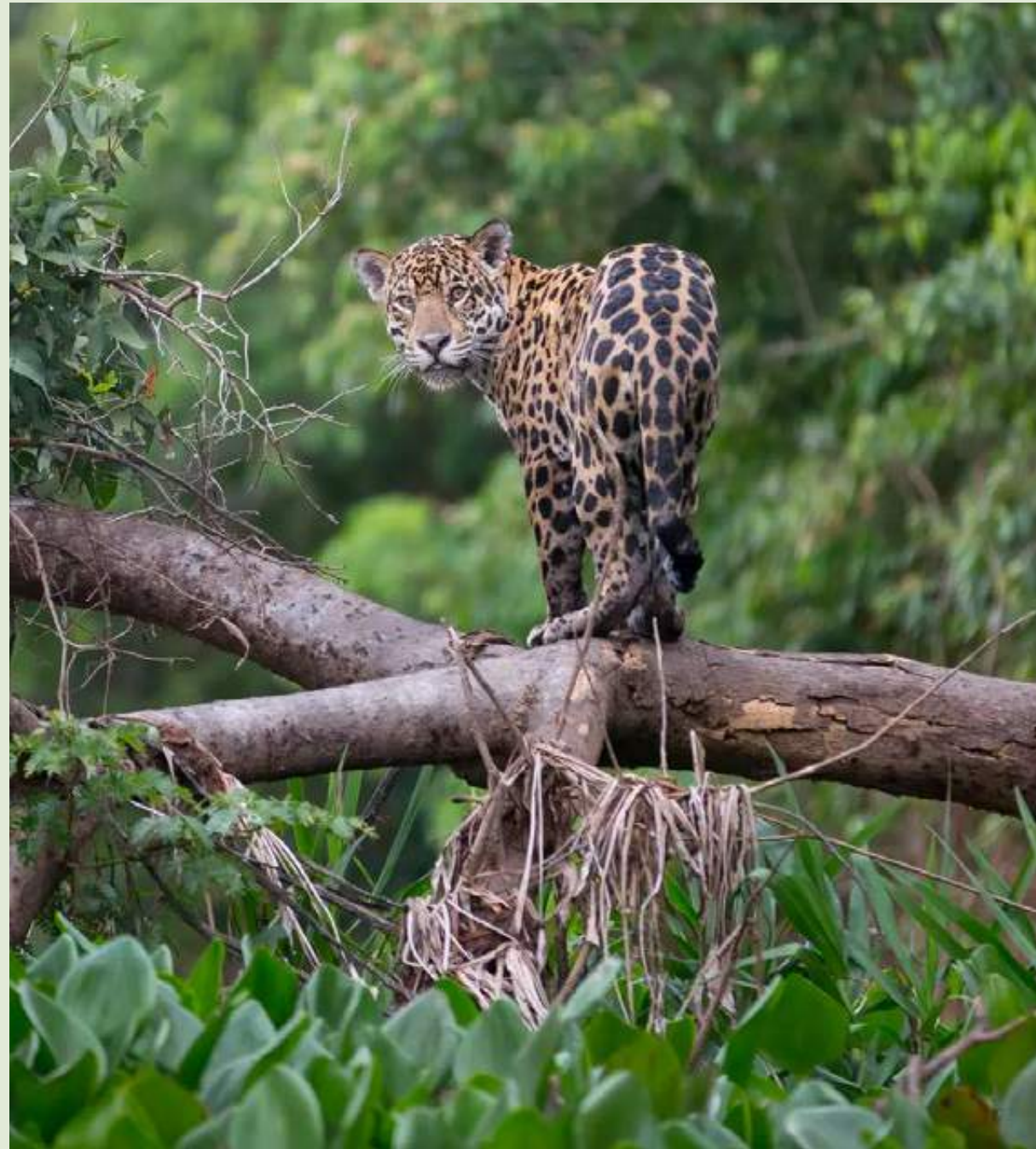
BEST TIME TO VISIT

All Year



RECOMMENDED STAY

3 to 4 Nights



Embark on a journey deep into the heart of the jungle aboard an Amazon River cruise. Navigate through the world's most biodiverse rainforest and river system, uncovering limitless wonders in this extraordinary ecosystem.









Embark on an extraordinary voyage to the ‘lungs of the planet’, home to one in every 10 species of flora and fauna. Considered the region’s most pristine expanse, the river banks are always in view when sailing these narrow channels, allowing incredible opportunities to spot wildlife in the jungle canopies.



Tambopata National Reserve



CLIMATE

Mild temperatures, high humidity, sporadic drizzles in winter



YEARLY TEMPERATURES

Min: 29°C – 84°F | Max: 32°C – 90°F



ALTITUDE

201.83 m a.s.l. | 662.16 ft a.s.l.



BEST TIME TO VISIT

April to November



RECOMMENDED STAY

3 to 4 Nights



Nestled in southeastern Peru, the Tambopata rainforest is a biodiverse sanctuary of lush jungles and winding rivers. Explore its vibrant ecosystems while traveling with purpose, preserving its untouched landscapes and the wildlife that call it home.





A Stay To Remember

Immerse yourself in nature at a rainforest lodge, nestled within the lush Tambopata National Reserve. Discover the authentic beauty of the rainforest in its purest form through exclusive activities, thoughtfully designed to explore while preserving this vital ecosystem.







Discover the Peruvian Amazon, where deep exploration of nature meets meaningful cultural exchange. By staying at one of the eco-lodges, travelers actively support sustainable efforts to preserve pristine landscapes, protect wildlife, and contribute to the well-being of local communities.





Andean